

# 20|20

---

## Case Pro 1200 Connect and IntelliView 12 Displays

### Overview

In order for the 2020 Monitor to receive GPS data from a third party receiver, the receiver, or display controlling it, must have NMEA Strings and Baud Rate configured for output. The basic requirements for the 2020 monitor are:

NMEA Strings: Set at **5 hz**.

- GGA: Time, position, and fix type data
- RMC: Time, date, position, course, and speed data
- VTG: Course and speed information relative to the ground.

Baud Rate: 19200 or 38400

Adapter Harness Needed: 727131 Trimble Adapter Harness (from Precision Planting)

### Connect the 2020 into the GPS Receiver

#### Step 1:

Locate the receiver on the cab, unlatch the receiver and flip it over



**Step 2:**

Using the 727131 adapter harness, plug the 12-pin Deutsch plug into the open port #2 in the back of the receiver

**Step 3:**

Reinstall the receiver on the cab and route the adapter harness into the cab to plug into the 4-pin GPS connection on the speed/cab harness of the 20120

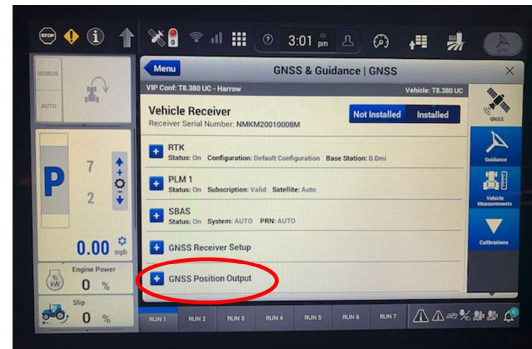
**Display Configuration****Step 1:**

Select the Menu button at the top of the screen, then press GNSS & Guidance



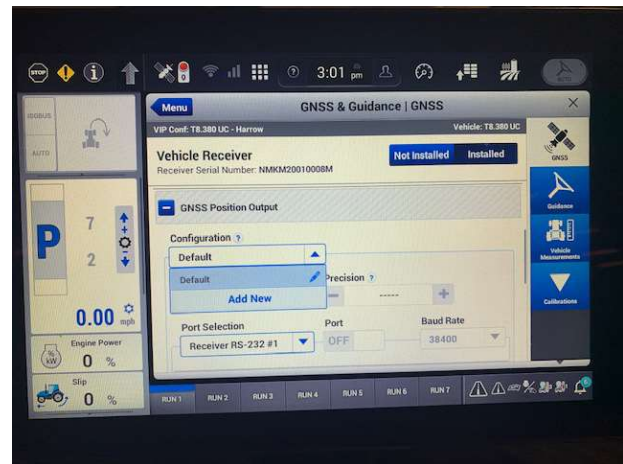
### Step 2:

Select the drop down for GNSS Position Output



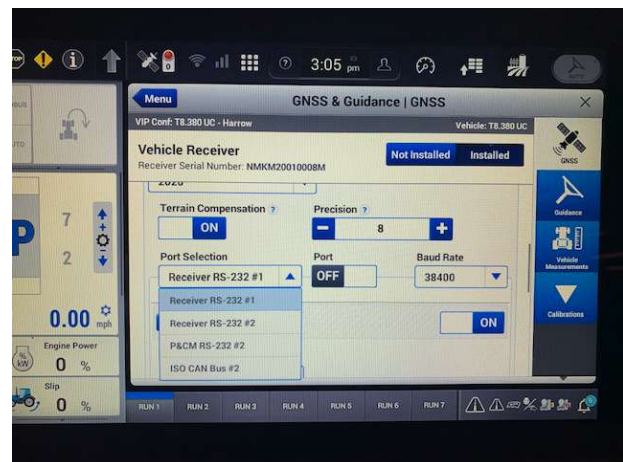
### Step 3:

Under Configuration, add a new configuration and give it a name (ex: 2020)



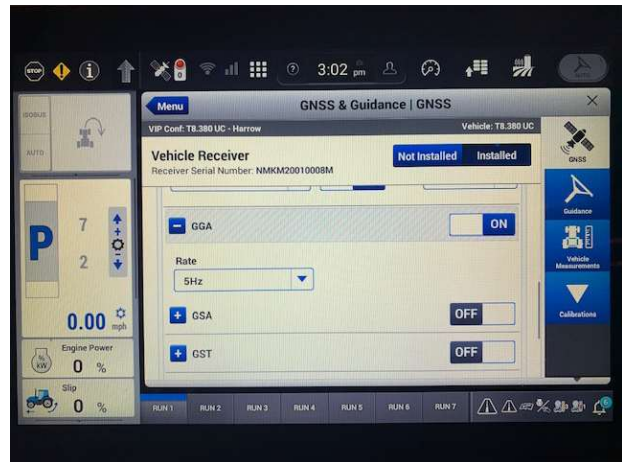
### Step 4:

Select the drop down under Port Selection and switch to Port #2. Once selected, turn that port "On". Make sure the Baud Rate is set to 38400



**Step 5:**

Scroll down on the display to set up NMEA strings. Set GGA, RMC, and VTG to 5Hz and toggle those strings to “On”

**Step 6:**

Setup is complete. Reacquire GPS data on the 20|20 if necessary